



CAW Newsletter



www.capwoodturners.org



Tree of the Month: Black Walnut

Black walnut is a large, moderately growing, majestic tree. Prized for its wood veneer at maturity; used in fine cabinets, gunstocks, and furniture. Makes a wonderful shade tree, and when planted for a wood plantation, a long-term investment. The Black Walnut will grow slower if exposed to droughty periods but is tolerant to drought. It has massive, upright spreading, open branches and it will lose its lower branches toward maturity.

The Black Walnut is a dependable producer of extra large crops for many years. The nuts are large and plump and crack out of the shell easily. The roots of the black walnut produce a substance known as juglone (5-hydroxy-alpha-naphthaquinone). This biochemical is toxic to many plants such as the tomato, potato, black and blue berries, and other plants that may grow within a 50 to 60-foot radius of the trunk. Not all plants are sensitive to juglone and many trees, vines, shrubs, and flowers will thrive in close proximity to a black walnut tree.



The Annual CAW Symposium

What exactly is a "Symposium?"

Symposium was originally referred to as a drinking party (the Greek verb *sympotein* means "to drink together") but has since come to refer to any academic conference, or a style of class characterized by open discussion rather than a lecture or a question and answer format.

The CAW symposium is a series of short demonstrations, each session lasting 90 minutes. Ninety minutes will not make you an expert, but you will learn important skills from the demonstrations. We are confident you will walk away from the symposium with information that is of value to you and will help you improve your current skills. The first CAW mini symposium was held in 2003 and was a huge success. Since then we have had five more each one drawing on the talents and experience of CAW member demonstrators. Now its time for number seven and we have a great lineup of CAW demonstrators.

Program Information for the Symposium:

8:00 am - the coffee bar is open so have a drink and a donut with your fellow turners. Discuss the items on the rotation schedule. The video library will be open, so rent a video. Talk over problems and techniques with someone who might already have been there and done that.

8:30 am - an explanation of what, how, and when we will be holding symposium events. A very abbreviated business meeting. Photos of member items will **NOT** be taken. A formal show & tell will **NOT** be held. A silent auction table will **NOT** be held. Supplies & tools for sale will be very limited.

Time Slot	Front Room	Gallery Room	Shop Area
9:00-10:30	Richard Allen	Priscilla Glasow	Pete Ward and CA Savoy
10:45-12:15	Frank Stepanski	Tom Boley	Don Johnson
CAW provided lunch. Sandwiches, chips, and sodas. (Video library will be open)			
1:15-2:45	Ed Karch	Amy Rothberg	Aaron Grebeldinger

Richard Allen	His signature platter.
Priscilla Glasow	Marbling your work.
Pete Ward & CA Savoy	Eagle head cane.
Frank Stepanski	Turning on the other side.
Tom Boley	Presenting well at craft shows.
Don Johnson	Decorative carving and fluting on turned pieces.
Ed Karch	Earth, bleach, and fire.
Amy Rothberg	Webturning - showcasing your work on the net.
Aaron Grebeldinger	Thinking outside the box.



CAW President's Message (Gerry Headley)

A quality education program is key to learning and safety on the lathe as it is in many other facets of life. It is so predominant in our mission, the first line of the Capital Area Woodturner's purpose statement reads: *"To provide education on turning techniques, finishing wood, safe practices, tools and related equipment."* It is with this in mind that I pushed for a large number of professional turners for our 2009 program. I wanted a diversity of skills and techniques provided to our membership for the year. This is something we are able to do as a large club than many smaller clubs can't do. With the nine local demonstrations at our symposium and at least six professional demonstrations throughout the year, we will have over seventeen various demonstrations for the monthly meetings. We will also engage in this learning process at the picnic as we had at the January "Your Turn" meeting. The cost of this program is spread out and balanced with membership fees and demonstration fees.

At our last meeting, some members asked the question, "Why did I pay \$7 for this demo?" In preparing for the 2009 budget proposal to membership, our board realized the demonstrator fees being charged each meeting were not enough to cover what the club had to pay for expenses over the entire year. In previous years, the club had simply charged a flat fee of \$5 for each demonstrator and so a flat fee increase of \$2 was presented for membership vote. In presenting this to membership and recommending that the fees be raised, consideration was given to the fact that not every demonstrator would charge the same rate and some turners might be pretty expensive to get. For instance, Mark did a lot of wheeling and dealing to get David Ellsworth to the club. Had we been able to get our schedules synched, demonstrators like Walt that charged half as much, would have offset his fees. By charging a flat rate of \$7 for all demonstrators that charged us, we hoped to even out costs and have a simpler collection system.

Last month's half-day demonstration is one example where the fee just didn't seem close to what we got. We are early enough in the year -- and for the most part know all costs to CAW for all demonstrators for the remainder of the year -- to make adjustments. Since David Ellsworth couldn't be on our schedule this year, we have some money to remedy last month's situation. While it is impossible to reimburse those attendees at March's short meeting, we feel we need to right this, so instead there will be no demonstration fee charged at the May meeting.

In the meantime, please remember that we are a nonprofit organization that depends on the membership for sustainment. We try to get the most bang for your bucks and we need your help in funding this endeavor. If you are one of many that have not paid their 2009 dues yet, please send it in now. While the economy may seem daunting, we are the best bargain for the woodturning craft in this area. Consider your dues as an investment in a quality education.

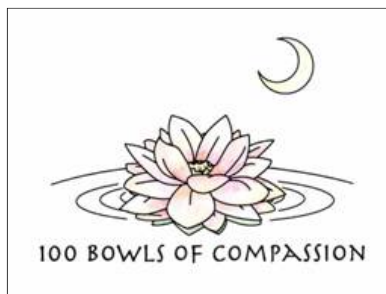
Gerry

Don Kelley - Farewell Friend



On April 22, 2009, our dear woodturning friend, Donald Ray Kelley, Lt Col, USA, will be inurned at Arlington National Cemetery (ANC). This service will be with full Army honors. His widow, Diane, has graciously invited us to attend. You do not need to RSVP. Her only request is that you identify yourself at Arlington so that she knows who you are. The service will begin at 11:00 am, but plan to drive to and arrive by 10:30 am at the Administration Building. (You can go to ANC via Metro Blue Line, but make arrangements with someone that's driving to meet you there.) We will be required to drive from the Administration Building to the Columbarium for the actual inurnment service. The cemetery does not provide transportation.

See <http://www.arlingtoncemetery.org/directions.html> for directions to Arlington National Cemetery and the Administration Building.



The **100 Bowls of Compassion** event will now include all of the following "dinnerware" for donations:

Bowls, rolling pins, salt shakers/pepper mills, vases/vessels, platters, goblets, and candle holders!

Please bring your items in for donation to **CAW's April meeting** if you want to have the items hand delivered as opposed to mailing them yourselves.

The call to artists and artist certificate form are located on the CAW website or contact [Christine Zender](#) and she will email you copies. You will receive a ticket for each item donated up to 2 tickets. Please contribute a turning or two to this worthy cause! This year's event is scheduled for Thursday, May 14, 2009 at the National Building Museum in Washington, DC.

Let's show them what the woodturners can do!

The club challenges you to enter some of your best work to this worthy cause.



Our New CAW Logo!

If you haven't already noticed, the CAW has a new logo for the club. Bob Pezold and C.A. Savoy have worked tirelessly with Shirt Art Inc. owner, Whit Evans, to produce a top notch logo. [Shirt Art, Inc.](#) has been serving the Washington metropolitan area for over 25 years and provides a host of custom screen print and embroidery choices. Shirt Art, Inc. has been working with the CAW for at least 10 years, providing embroidered and screen printed items. With input from CAW they designed and produced the wood turning smocks many of our members purchase, as well as the golf shirts, denim shirts and other items. Shirt Art, Inc. is a full service graphics company, providing not only embroidery and screen printing, but ad specialties, logo design, magnets, banners etc. For more information on Shirt Art, Inc. see their website at: www.shirtartinc.com



About Our Members (Joyce Beene & Phil Brown)

Tom Boley recently formed Catoctin Area Turners (CAT). They meet on the second Thursday, 6:30 to 9:00 pm at the Banshee Reeks Nature Preserve, 21085 The Woods Rd, in Leesburg, VA.

Phil Brown will talk a bit about design and the processes he uses in turning flared vessels at the April 9th meeting of Montgomery County Woodturners in Rockville, MD.

Neal Kagan's turned and carved piece, Wedding Flower, was accepted for the AAW juried exhibition "Turning to the Future: a Fresh Look at Wood Art". This exhibition will be open March 20 to May 11, 2009, which includes The Collectors of Wood Art Forum, April 2-5, in Asheville, NC. The opening reception is April 4th at the Grovewood Gallery, 111 Grovewood Road, Asheville. See images at:
www.grovewood.com/turning_to_future.php?artist=kagan

Mike Kinney will take a 3 day course at Jimmy Clewes new woodturning school in Las Vegas (yes, in Nevada) for the April 20-22, 2009 session.

John Noffsinger has nine of his finest pieces on display in a wall case at the Clinical Center Galleries, building 10, at NIH in Bethesda from March 6 to May 1. Pieces include "Iron Trees" (burl canopy over metal branches) and works in a new series called "Stone Forest". For further information contact the curator, Lillian Fitzgerald at Lillian@ffineart.com

Also **John's** vessel #137 was juried into the Art League's "All Media Members Show" for March at the Torpedo Factory in Alexandria. And, a three inch Black Walnut bowl, "Super Bowl", was placed in the Bin Gallery at the Art League.

CA Savoy was again involved in preparing publicity on the Eagle Cane Project, which has been under way since January 2007. He is shown in the last quarter of this short video:
http://www.youtube.com/watch?v=IH9WzDHCUjA&feature=channel_page

Clif Poodry teaches each month with BEGINNING BOWL TURNING on May 16, July 25, and September 19. Then alternates with ADVANCED BOWL TURNING on April 18 and 19, June 20 and 21, and August 15 and 16 at the Woodworkers Club in Rockville, MD. See: <http://www.woodworkersclub.com/practice%20class1.htm>

Aaron Grebeldinger will teach Bowl Turning on Saturdays May 2, June 6, and July 18, 10 - 5 pm. **Nate Johnson** teaches The Art Of Wood Burning on Saturday, May 9th, 10:00 am - 5:00 pm. Introduction To Hollow Turning with **John Noffsinger** is scheduled on June 9 and 16 from 6:30 pm - 9:30 pm at WOODCRAFT in Springfield, VA. Call the store at 703-912-6727 to register, or see www.woodcraft.com/stores/store.aspx?id=327&nav=classes

Tom Boley will be teaching Bowl Turning on April 4th and June 27th. Classes are from 10 am - 5 pm at the Leesburg WOODCRAFT store. To register, call 703-737-7880 or email them at: Leesburg@Woodcraft.com. See the class schedule at: www.woodcraft.com/stores/store.aspx?id=575&nav=classes.

Mark Supik offers seven Saturday class on different subjects in April, May and June at his commercial Baltimore shop, with emphasis on between centers turning and bowls from green wood. The lathes and shop are a treat to see and use. The shop is just a few blocks west from the Lombard Street exit off of I-895. For details see: <http://www.marksupikco.com/School/schoolcurrent09-1.html>

Don't Be Shy! Promote yourself. Tell us about your woodturning activities in the CAW Newsletter. Send your information to us by the second weekend of the previous month. Deadlines tend to be early in the month. Send to: Phil Brown, phillbrown@comcast.net or call (301) 767-9863 or Joyce Beene at joyce.beene@gmail.com or call (703) 978-2032.

Upcoming Meeting & Event Information - (Mark Wollschlager)

Month	Meeting & Event Information
April 11	The CAW Mini <i>Symposium</i> . Bowls, hollow forms or other 'dinnerware' due. Please bring the items in a box for easier transport .
May 9	Barbara Dill will be demonstrating multi axis spindle turning with a workshop to follow in the afternoon.
June 13	CAW Picnic and the AAW Symposium in Albuquerque , NM.
July 11	Terry Scott from New Zealand (tentative)
August 8	J. Paul Fennell Carved and pierced hollow forms. Workshop = \$110 (carving, embellishing hollow forms with rotary tools)
September 12	Alan Hollar "Now you have a burl, what are you going to do with it?" Workshop = \$50
October 10	John Jordan Workshop = \$90
November 14	TBA
December 5	CAW Christmas Woodturner's Ball

Workshops are conducted by professional woodturners. We have been fortunate with coordinating workshops in conjunction with all our visiting demonstrators. Additionally on occasion we have professional turners who are in our local area and will offer a one-day workshop. Workshops are conducted at the Bryant Learning Center typically scheduled from 8:30 – 3:30 pm with lunch usually around 11:30 am. Fees charged for the workshops vary and will be announced with the workshop information. We conduct workshops on days the Bryant workshop is available.

Workshop signups. Class size is usually based on the complexity of the workshop. The more complex topics have a lower number of workshop attendees. Workshops are filled on a first come, first serve basis. I will place your name on the workshop list the day I receive payment. I will hold your payment until the day of the workshop. Once the workshop is filled a standby list is started. If you're paying by check please make out one check per workshop and make the checks payable to CAW. If you cannot attend a workshop you have paid for, please send me notification so a standby can be selected and notified to fill your position. Contact [Mark Wollschlager](#) to sign up for workshops. Upcoming workshops are listed in the schedule above.

CAW's 20th Birthday!

Bylaws for the formation of CAW were signed on September 16, 1989 by founding President Sid Stone and Vice President Jim Lillie. (Sid now lives in Millwood, NY, and Jim is deceased.) A Secretary and Treasurer also signed, but we cannot read their names to know who they were. CAW didn't begin meeting on a regular monthly basis until September 1991. The 2009 AAW Resource Directory will contain a statement acknowledging our 20 years that was written primarily by Bill Bearden, Phil Brown, and Gerry Headley.



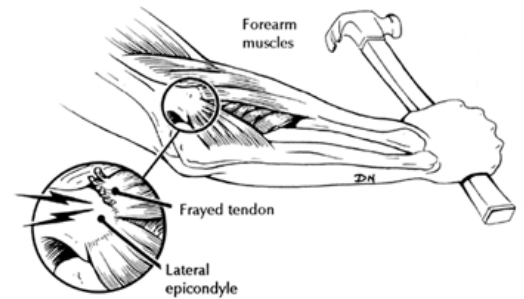
A new woodturning club? Where?

In Loudoun County, VA, a group of determined men and women have started a new woodturning club. Named after the "mountains" which run from just southwest of Leesburg to well up into Maryland, the **Catoctin Area Turners**, also known as CAT, met for the first time on January 8, 2009 at the Leesburg Woodcraft store. Forty-one attended, making the classroom pretty full. The club met a second time at Woodcraft but have now found a permanent site at the Banshee Reeks Nature Preserve, a Loudoun County park about five miles south of Leesburg. That brings to three the total number of woodturning clubs in Northern Virginia and sure makes it easier for interested persons to find a convenient club for themselves. Our own Tom Boley is the inaugural president of CAT and it is to him you should go for more information about this new organization, already incorporated. Contact Tom at 540-338-1718 or at tboley@erols.com.

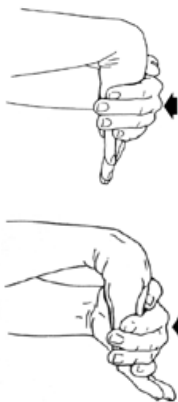
From The Editor (Christine Zender)

Okay, last month I wrote about chainsaws. This month, I'm going to touch on another issue common to woodturners - tennis elbow (otherwise known as 'turner's elbow.") You see, I was turning a lot up until early February when my elbows were hurting badly. I think my turning form was incorrect and I was also pushing too hard with dull tools (I'll have to work on my patience with sharpening.) I finally couldn't stand the pain and went to an orthopedic surgeon upon referral from my regular doctor. He offered me the cortisone shots or physical therapy. I chose the therapy because I want to keep turning and I'll need to learn how to manage the pain of tennis elbow but more importantly, how I can prevent it from happening again.

So now I'm in physical therapy twice a week. My therapist told me at our first meeting - no turning for two weeks. I found myself bargaining with her.. "how about sanding or carving?" I asked. No. Nada. This includes activities such as buffing, yard work, heavy lifting, etc. Basically, no repetitive tasks that would put pressure on my elbows allowed during this time period. She said I was smart in coming to her sooner than later because she said we can get rid of the pain and heal the elbows now, and with exercises and other information she gave me, I'll be able to manage any future pain in my elbows caused from turning.



- Some symptoms of tennis elbow are:
- Pain at the outside of your elbow that occasionally extends into your forearm and wrist
 - Weakness in the forearm
 - Pain when extending your wrist
 - Pain during specific activities like turning a doorknob or shaking hands
 - Pain that gets worse over weeks or months
 - The inability to hold or lift small objects



Exercise 1. Stretching the muscles that extend the wrist (extensor muscles): Straighten the arm out fully and push the palm of the hand down so you feel a stretch across the top of the forearm.

Exercise 2. Stretching the muscles that flex the wrist (flexor muscles): straighten the arm out fully (palm side up), and push the palm downward to stretch.



Exercise 3. Stretching the triceps will also help relieve the pain. (picture above)

Here are a few tips to also help strengthen muscles and avoid injury:

- Stretch to warm up muscles and take frequent breaks while turning.
- Steer your car with your arms resting by your side, not on the door or wheel. Use a pillow under your arms if there are no arm rests.
- Place hands at 4 and 8 o'clock on the steering wheel.
- Write with a thick-shaft pen. Avoid metal pens.
- When holding a coffee mug, place your arm at your side with forearm extended and wrist straight. To sip, adjust grip and swing the arm up.

Repeat the exercises in the box above one set of ten per arm, twice a day, but do not push yourself beyond the point of pain. Hold the stretches for about 5 seconds. Also, do them at breaks while turning. My physical therapist also said to ice down my elbows after turning for 15 minutes each elbow as that will also help keep the pain at bay.

I'm anxious to start turning again, but will do what I can to heal my poor elbows. If you have pain from turning, please get it looked at by your doctor right away. Well, gotta' run... time to do some stretches!

CAW & NVC: An Intertwined Relationship (Joyce Beene)



The Capital Area Woodturners (CAW) joined together with Northern Virginia Carvers (NVC) in early 2008 to produce eagle head canes for wounded soldiers. This has been a very successful ongoing project, with the carvers producing the carved eagle heads and the turners producing the turned staffs. Over 120 canes have been completed and presented. And there is still a need for more. The project is headed up by C.A. Savoy for CAW and Hank Cloutier and Pete Ward for the NVC. Because many of the turners do not know much about the Northern Virginia Carvers, Christine asked me to write up something about NVC.

Northern Virginia Wood Carvers has been going strong since 1973, although the club was in its heyday in the 70s and 80's with about 200 members. NVC has as its mission is:

- To preserve, enhance and perpetuate the American cultural tradition of artistry and craftsmanship in woods.
- To promote wider community interest in woodcarving as an art form and craft through demonstrations and educational activities.
- To provide guidance and assistance to beginners and experienced alike.
- To create opportunities for fellowship with others who share an interest in carving regardless of their level of carving experience.
- To let the general public experience the joy and "feel" of wood carving.



Back then, carving tools were difficult to find, and the NVC carving center provided not only a place for carvers to get together and carve, but also the club bought basswood, butternut, and good quality tools in bulk to resell to members at great discounts. In addition, a large carving competition/show was held annually, and was attended by vendors and carvers from Pennsylvania, Virginia, and Maryland. Now that tools are readily available on the internet and at Woodcraft, membership has dwindled to just under 100.

NVC now meets weekly at Woodcraft in Springfield every Thursday from 4:00 to 9:00 pm, except for the 3rd Thursday. It is much like CAW Skill Enhancement events. Everyone works on their own project, and is always willing to offer advice and help a fellow carver. On the 3rd Thursday, NVC meets at the Packard Center, in Anandale Park on Hummer Road., also starting about 4:00 pm, but at 7:00 pm there is a formal business meeting, show and tell, and a demonstration or program.

Other programs run by the NVC are:

- A summer carving instruction program at Colvin Run Mill on Route 7 on the 1st and 3rd Sundays of June, July and August, from 12 Noon to 4:00 pm.
- A carving instruction program for veterans at Malone House, Walter Reed Army Base, on the 1st and 3rd Tuesdays from 4:00 to 7:00 pm.
- An annual show and competition, covering all types of carving, turning, burning, scroll saw work, in October at Woodcraft in Springfield.
- Various demonstrations at local craft shows and the Washington Woodworking Show.

Dues for NVC are \$20 per year for individuals plus \$5.00 for each additional family member, January through December. There is no additional charge to attend either the carving center or the program meetings. If you are interested, visit the NVC website at www.northernvirginiacarvers.org, where you will find information, an application, and directions to the Woodcraft carving center and the monthly meeting at the Packard Center.

Over the years, a number of wood turners, like Bob Marshall, John Overman, Neil Kagan, and more recently, Christine Zender, joined NVC to improve carving skills. Many carvers, like me, Peter Ward, John Sullivan, Paul Beningar, and Herb Coquelin, have joined CAW and are learning to turn. And in the past, there have been other turners who were also members of NVC, like Mike Parker and John Noffsinger. I am sure there are other turners and carvers I have not mentioned, but is evident to me that the two clubs are intertwined beyond participating in the Eagle Cane Project.

Instant Gallery Review - Joe Cavanaugh - (Richard Allen)

I spoke with Joe Cavanaugh about one of his bowls displayed on the March Instant Gallery (IG) table. What struck me about this bowl was the high level of precision he put into the bowl. This was evident in many aspects of the bowl. The wall thickness appeared to me to be constant from rim edge to bottom. The texturing on the rim edge was actually an embossing which carried on that precision. The curve was very organic and there was precision in turning a tall shape without flat spots. We all make choices when turn wood and I was interested in those choices Joe had made.



Joe was excited to talk about his bowl. His excitement reminded me of the way I feel about the turnings I make. I have often thought in the past about the reaction club members have to turnings displayed in the instant gallery. Mostly the club members are tight lipped about turnings in the IG. There is some good natured kidding, some praise and some conversation about techniques. One of the things we almost never talk is the why we turn a particular object or the choices we make.

Joe made a bowl with an ogee shape with a small foot and an even, thick wall. This general shape worked wonders in the smaller form I referenced in the January CAW newsletter. The bowls I make tend to have wide rims, thin walls, and thicker bases. I do those things for a reason. I want the rim to show even if the bowl is full of "stuff" so I make a wide rim. Joe made it all the same thickness but curved the wall of the bowl to achieve that "visible full bowl" effect. And then John did a wonderful thing. Joe added delightful texture to the thickness of the rim.

For me the effect was that the bowl had an open inviting shape which drew my eye to the interior of the bowl. But as my eye approached the slope in curve at the top of the bowl my gaze was stopped by the texture detail on the edge of the rim. Sometimes combining organic with precision can fight with each other for your attention. Sometimes, as in the case of Joe's bowl the two work together.



The shape and finish of the bowl encouraged fondling and caressing. The size and weight of the bowl was of a human scale. What is "human scale?" A size which fits with a human and what a human can do with that object.

What did I learn from Joe and his bowl? That I should take my time with the process of turning the objects I make. I need to consider how different features in the wood, and added to the wood, work together. I need to expect to be excited when I turn wood because it is FUN!



Chantilly, Virginia

Here are some photos of the CAW club participation in the annual woodworking show in Chantilly, VA.



Al Melanson & Patrick Obrien



CA Savoy



Jim Neam and a new woodturner.



Frank Stepanski





Chantilly, Virginia (Continued)



Frank Stepanski & Ed Karch



Mike McInerney

The Capital Area Woodturners had another great turn-out at the show this year. We had a great time demonstrating our fine craft as well as displaying some beautiful pieces. The CAW's booth is one of the more popular areas in the show because of the turning, displays and the opportunity for show goers to turn a pen at the Craft USA booth.



Harriet Maloney



Kathy Schroeder & Meriam Fairfield

Spalted Maple Bowl With Inlay Ring And Collar (Steve Schwartz)



I am a former Industrial Arts Teacher and was first introduced to a lathe in 1975. As part of a college woodshop class I had one lesson on how the lathe worked, how to mount the wood using a glue block and faceplate, and all the tools. The tools being a spindle gouge, round nose scraper, a straight scraper (skew) and parting tool. After making one project I was considered knowledgeable enough to teach this through high school level. I loved it, my students loved it and we scraped our way through lots of great projects and used the 80 grit gouge (sandpaper) to grind our way to a good finish. I've seen amazing growth in the creation of new tools and teaching resources in the past 20 years which gratefully makes it possible for us to be much more creative and sand less. I came across the idea for this bowl while unsuccessfully trying to sleep in one morning and was pleased that it came out exactly as I envisioned it. I felt that the inlay ring would add more

interest than laminated rings since I could leave the ring and collar proud of the surface. The first thing my fellow turners did when I showed them the bowl was run their finger on the inside to see how well it was sanded. Then they tried to peer inside when they couldn't feel the underside of the inlay ring. I knew this would happen because only a turner would care if the part you couldn't see was sanded or not. Then they wanted to know "how did you do that!" ... here's how.

<p>1. I start by creating my bowl profile keeping in mind where I want the ring. It is best to choose fully dried woods which are unlikely to have much movement.</p>		<p>4. Next I match the profile on the wood being used for the inlay. Note the two marks on the template that indicate the width of the ring in it's position relative to the bowl.</p>	
<p>2. Use a molding profile tool being careful to align it perpendicular to the bed.</p>		<p>5. When the inlay profile is ready and it's outer diameter cut, I use a thin parting tool to cut in from the edge making the ring roughly 1/4" thick. The ring will be very brittle on the end grain so don't make the ring too thin. Try to match the angle of the surface profile. If not obvious, the angle that counts is on the undercut. This allows the ring to fit into the recess in the bowl with a matching angle.</p>	
<p>3. Transfer the profile to a scrap of plywood to use as a template.</p>		<p>6. Part off the ring at the inside diameter mark.</p>	

Spalted Maple Bowl With Inlay Ring And Collar (continued)

7. Transfer your ring size to the bowl and cut the recess to fit the ring. Use a parting tool and sneak up on the inside and outside diameters very slowly with frequent trial fits. Try to match the profile angle of the bowls surface and cut in about 1/8 – 3/16 deep. To cut the oblique inside angle on the outside of the recess you might consider re-profiling your parting tool to a matching angle.



8. The inlay ring should now sit proud of the surface. This leaves open your options to flush cut, or shape the ring as I did to leave it proud of the surface. The biggest problem I encountered on the bowl used in this example was when I achieved my final fit I broke the ring on that brittle end grain trying to lift it out. You should now glue the inlay permanently in place. I used yellow wood glue, thinking that this would help fill any gaps where the fit beneath was less than perfect but medium CA glue should be fine.



9. I wanted the collar to be the only color wood showing at the rim so I cut a recess about 1/2" smaller than the final opening and about 1/2" deep then flattened the top surface of the bowl going back about 3/8". This left me with a 90° edge to fit my collar into. Conveniently the piece of wood you cut the ring from is large enough to use for the collar. I cut the outside diameter to match the recess leaving it just a little bit oversized. The depth of the collar rebate should be slightly less than the depth of the bowl recess. The collar will be glued on the surfaces of the rebate and the center is turned away so it doesn't need to fit flush.



10. Fit the collar to the bowl by taking fine cuts and checking for a tight fit frequently. Try to align the grain orientation of the inlay ring and collar then glue the collar in place. You are now ready to clean up your outside profile and start hollowing.

If you have questions or comments about this beautifully crafted bowl, you can contact Steve at graphicsstudio@cox.net.



Meet The Turner - Tom Boley



I have been actively turning since, as best I can recall, 1995. I had heard of lathes but can't recall ever having seen one until I attended The Woodworking Show at the Dulles Expo Center and found a bunch of CAW members with three mini-lathes and three shelves of turned items. I stood there watching for a good couple hours, spending most of the time talking to Don Chamlee about the craft. I was fascinated. Of course, I joined CAW and later found a used Sears four-speed for sale in the paper. I bought it, along with three tools which I did not know how to sharpen, and set it up at home. I played around with it a bit but didn't really understand what to do with it until I took Bill Hardy's class through Fairfax County adult education.

These days, I am a full time woodturner doing primarily custom architectural turning for both restoration and new construction. Mostly what I make in my business is custom balusters and newels, but also make quite a few rosettes and finials along with an occasional porch post or column base. I have made some mighty unusual things, too, and have a story about that on my web site at www.redoakhollow.com. When I am able, I spend time on the artistic side of the craft, making bowls, bottle stoppers, pens, and the like. I have particularly enjoyed making large flat trays. However, the pieces which I enjoy making the most are those of burl in which I am able to retain a lot of that rugged burl surface.



My shop - Red Oak Hollow

The largest pieces I have made are two 32" x 5 1/2" Greek shields of red oak for a customer. When glued up, two of us could hardly lift the block. When finished, one weighed 12 pounds and one 13 pounds. The smallest is a pair of birdhouse earrings which I made for Judi. I have been asked to provide some of those earrings to the Round Hill Art Center gallery so hope to be able to do so this month. I have also exhibited at the Artisans United gallery and the Artisans Center of Virginia. Craft shows have always been a lot of fun as so many visitors really don't know much about turning wood. It is a real pleasure to chat with them about the craft.

In my custom work, I use poplar more than any other kind of wood. It paints well so if it is to be painted, it's



A Greek shield rounded with a chainsaw and then mounted outboard for turning. Before and after.

Meet The Turner (Continued) - Tom Boley

poplar. It's also quite inexpensive at about \$2.50 a board foot. But I also use cherry, red and white oak, walnut, mahogany, and occasionally beech, birch, and other domestic woods. My favorite wood to turn is probably olivewood as it turns so nicely and I love the smell. Cocobolo is great, too, and I particularly like the cocobolo which has the yellow streaking in it. I don't much care to turn either mulberry or osage orange, only because I don't care all that much for the color, although they are very good turning woods. A couple of things I don't turn are pressure treated wood and plastics. The pressure treated stuff is just too dangerous to create a bunch of dust. Even using a dust mask, the dust will still be in the shop. I have turned PVC to make vacuum chucks, but to do it commercially is no good as it just makes long plastic streamers which are full of static electricity, cling to everything, and are hard to clean up.

I would advise anyone starting in this hobby to either take a class or get with someone who can help you get started. You will shorten the learning curve considerably and probably be safer, too. The CAW mentoring program is a great resource for new turners.

I have four lathes. My first was that Sears 4-speed, which I sold to get a Jet 1236, which I sold to get my Stubby S750, which I love. It is a great piece of gear. I also have a Delta Midi, which I got so my son could turn with me and which I could take to craft shows and other demonstrations. For the business, I have a Oneway 2036 with two bed extensions and an outboard extension. I can do 12-foot porch posts on that or up to 44" diameter pieces on the outboard side. The fourth lathe is a Centauro T-5 hydraulic copy lathe. It is great for turning out a couple hundred balusters. It's like a giant key-making machine.

My workshop is a separate building from the house, 24' x 36', with heat, A/C, and a concrete floor. There is a 10' x 10' door on the front and an 8' x 8' door on the rear side which I can slide open in good weather. It is delightful. The whole shop is plumbed for my dust collector, an Oneida 7.5 hp unit which works mighty well. Of course, in the winter, it also collects all the warm air and pumps it outside but having the system outside sure cuts down on noise. My favorite woodturning tools are my 3/8" bowl gouge, my 1 1/2" spindle roughing gouge, and a collection of tools which I use as scrapers which are ground from jointer blades. I also use a skew a lot but wouldn't necessarily list it as a "favorite tool."



I was born in Manhattan, KS, raised in Kewanee, IL, lived nine years in Japan, and currently live with my wife, Judi, our two cats and one turtle in Loudoun County, VA, out in the country southwest of Purcellville. I worked as a police officer while in college, put in three and a half years in Army counterintelligence, 27 years in the Naval Criminal Investigative Service (NCIS), and am now a woodturner. My hobbies, besides turning, are scuba diving, flying, and downhill skiing. I am a flight instructor, too.

This has been a great hobby. It took me two years to figure out why it was so much fun, but one day I had a flash of inspiration and realized that it is the instant gratification thing. I can take a piece of wood from the wood pile and in an hour, I have a show piece. It also really helps in choosing wedding, Christmas, birthday, graduation, and other gifts. I was very concerned about taking a HOBBY, which I loved, and turning it into a BUSINESS, which might feel like WORK. Well, there are work aspects to it, of course, but I am thoroughly enjoying what I do and have found that I can work alone very easily. However, I always welcome visitors so would invite my friends from CAW to come out to visit the shop and see the kinds of things I now make. The Call of the Lathe is mighty strong in this part of Loudoun County.



Academic mace for Patrick Henry College being carried in graduation.

Instant Gallery - March's Club Meeting (Photos by Philip Hall)



Bubinga bowl - Joe Cavanaugh



Poplar; black with gold leaf - Joyce Beene



Bowl with scroll pattern - Joyce Beene



Maple/Ebony/Cocobola segmented turning - Nelson Brown.



Australian burl turning - Nelson Brown

Instant Gallery - March's Club Meeting (continued)



Padauk/Zebra/Pao Amarilla/Maple segmented bowl - Gene Crosby



Architectural series - Jimiin Zhuang



Mulberry bowl - Bob Horowitz



Zebra bowl - Joe Gallio



Ambrosia maple and poplar fiddle - Ed Karch. This item was donated to the Mclean Youth Orchestra. Way to go Ed!





CAW Mentoring Program

Do you want help with a specific project or improve your general woodturning skills? Then the CAW mentoring program is for you. You can contact Annie Simpson, at simpson.annie@gmail.com for an explanation of the process or assistance in finding a mentor in your area.

CAW New Members!

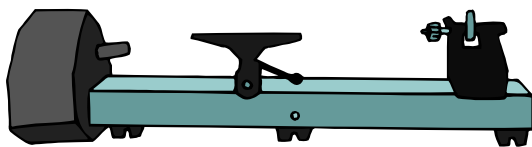
Welcome! We are happy you've chosen to contribute your talents to our club. We look forward to the contributions you will make and the pieces you will bring in to Show & Tell. Your participation will add to our mutual love of woodturning and to our collective knowledge and skill. Membership in the CAW Chapter is open to anyone interested in the art and craft of woodturning.

Patricia Lawler	Springfield, Virginia
Kirby Thornton	Mason Neck, Virginia
Herbert Gellner	Clinton, Maryland

We want to hear from you!

Your comments and articles are welcome for the CAW newsletter. Please submit by the 15th of the month for the next newsletter. Email or contact Christine Zender.

Contact info on last page.



Become A Member Of CAW Today! CAW Application

<http://www.capwoodturners.org/cawa.htm>

Montgomery County Woodturners Meeting Schedule - 7 - 9pm For more information: montgomerywoodturners.org	
January 8 - Mark Supik	February 12 - Ed Karch
March 12 - Stan Sherman	April 9
May 7 - Barbara Dill	June 11
July 9	August 6 - J. Paul Fennell
September 10	October 8
November 12	December 10

Books-O-Wood

**WOODTURNING
FULL CIRCLE**
DAVID SPRINGETT



Woodturning Full Circle by David Springett

This inspiring book provides a wealth of fascinating projects for woodturners. It will extend their skills and give them a chance to try more unusual, challenging pieces. The book reflects the author's fascination with complex geometrical shapes, puzzles and mathematical curiosities. It gives woodturners the chance to try their hand at making twisted polygons, gravity-defying clocks and much more. A wealth of close-up photographs guide the reader through each project and a gallery section provides further inspiration, showing how a range of artists have decorated the author's work. David Springett's interest in woodturning began when he was a woodwork teacher - by reading each of the few books available, experimenting and persevering, he improved his skills. Since leaving teaching nearly 20 years ago, he has earned his living doing what he enjoys most. David and his wife Christine live in Rugby, Warwickshire.

Vendors



C. A. Savoy places orders throughout the month. Check your catalog or website at: www.oneway.on.ca. Email your order to **C. A. at cadsavoy@cox.net**. C. A. makes every attempt to have your order within one week. Items can be picked up at Bryant Center on the 2nd Wednesday or last Tuesday during the Skill Enhancement workshops, at the monthly meetings or by special arrangement. C. A. can also ship your order to you. Payment is due upon receipt of your order. **CAW Oneway Sale: 20% off most products except lathes. Plus shipping. Free shipping on orders over \$1000.** Will provide quote upon request. Happy and safe turning!



2Sand.com is a Maryland-based coated abrasive specialist serving woodworking and woodturning workshops, founded on the principles of fast service, fair prices, and superior products. We carry sanding discs, sandpaper sheets, and woodturning tools, and we can ship them to you today. If we offer a product on our web site then we have it in stock and ready to ship. R. J. Stroman, a CAW member, operates 2sand.com. Contact **Rob at RJ@2Sand.com** or (800) 516-7621 or visit their website at: www.2sand.com

Penn State Industries



Whether making gifts for your family or items to sell in craft shows, it's time to get your order in for Penn State pen or project kits. Check out the new Penn State website at www.pennstateind.com and email **Amy Rothberg at amy@landingcrafts.com** with your orders or questions. Also note that Amy is a Teknatool dealer of Nova and Super Nova chucks and accessories.

**How much wood could a wood chuck chuck, if a wood chuck could chuck wood?
Quite a bit with those teeth!**





CAW 2009 Officer Roster

President, Gerry Headley,
gerryh3333@aol.com (410) 286-5958
 PO Box 164, Owings, MD 20736

Vice President, Bill Bearden,
bebearden@verizon.net (540) 972-9595
 120 Eagle Ct., Locust Grove, VA 22508

Treasurer, Phil Mannino,
phileman@cox.net (703) 250-2876
 11543 Clara Barton Dr., Fairfax Station, VA 22039

Secretary, Al Melanson,
almelanson@msn.com (703) 250-6781
 5561 Ann Peake Drive, Fairfax, VA 22032

Program Director, Mark Wollschlager,
markwoll@his.com (703) 329-6305
 5914 Otley Dr., Alexandria, VA 22310

Operations Director, C. A. Savoy,
cadjsavoy@cox.net (703) 765-7268
 1309 Gatewood Dr., Alexandria, VA 22307

Newsletter Editor, Christine Zender,
xinezen@gmail.com (703) 425-7114
 5512 Lakewhite Court, Fairfax, VA 22032

Club Support Volunteers

Tom Boley, Newsletter Proofreader
 Philip Hall, Show and Tell Photos
 Richard Chilcot, Video Library
 Aaron Grebeldinger, Education Outreach
 George Salinas, Bryant Display Window
 Jonathan Hess, Walter Fink, Raffle/Auction
 Mike DeWan, Walt Fink, Raffle/Auction
 Bob Pezold, CAW Clothing
 Annie Simpson, Mentor Program
 Priscilla Glasow, Group Buys
 Lou Norris, Coffee Center

Dates To Remember - April 11th — Monthly CAW Meeting At Bryant HS (8:30 - 3 pm)

April 8 & 28 — Skill Enhancement Workshop At Bryant HS (9-3 pm; \$5 fee if using any tools (Lathe, band saw, drill press, etc.) Must be AAW member to use any tools. Watching is free.

Skill Enhancement Point Of Contacts

C. A. Savoy: cadjsavoy@cox.net
 Don Johnson: dripapaw@aol.com
 Al Melanson: almelanson@msn.com
 Patrick O'Brien: ohbewood@comcast.net
 Alan Becker: alan-becker@comcast.net
 Please contact C. A. Savoy if you would like to reserve a specific lathe for skill enhancement.

2009 Meeting Schedule

January 10	"Its Your Turn"	July 11	Terry Scott
February 14	Wayne Dunlap	August 8	J. Paul Fennell
March 14	Walt Bennett	September 12	Alan Hollar
April 11	CAW Symposium	October 10	John Jordan
May 9	Barbara Dill	November 14	TBA
June 13	CAW Picnic	December 5	Christmas Party

Monthly Meeting Details For April 11, 2009

8:00 am - Set up for the symposium. Have a cup of coffee and donut with your fellow turners. Discuss the symposium or rent a video. Talk tips and techniques with other members. Limited items for sale, no show and tell nor photos of turnings.

8:30 am - A brief business meeting.

9:00 am - The CAW symposium starts. The tape/DVD library will be open.

12:30 pm - Lunch

1:15 - 2:45 pm - CAW Symposium

3:00 - 4:00pm - Clean Up



Monthly Meeting Information - Bryant Adult Education Center
 2709 Popkins Lane, Alexandria, VA

Map with driving directions here: www.fcps.edu/maps/bryant.

If your contact information changes, including your email or mailing address, please contact Phil Mannino at phileman@cox.net.

Directions: From VA or MD, take I-495/I-95 towards the Wilson Bridge over the Potomac River. Take Exit 177A (Rt. 1 South) on the VA side. Approximately 1.9 miles south, you will pass the Beacon mall complex with Lowe's on your right. Drive past the main entrance to Beacon mall, go 4 more stop lights (about 1/2 mile.) The 4th stop light is Popkins Lane. Turn left and go two blocks. Bryant Center entry is on the right. Drive to the East side of the building. Parking is on the side or in the rear of the building. The entrance to the wood working shop and meeting rooms is off the back corner of the east side of Bryant Center.

Christine Zender, Editor
Capital Area Woodturners
5512 Lakewhite Court
Fairfax, VA 22032